



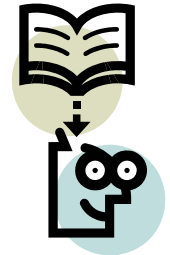
2010 - 2011 PROFESSIONAL DEVELOPMENT SCHOLARSHIPS

Your CAS/MAS is Within your Reach, Let PPAChicago Help

Be recognized as an industry expert. CAS/MAS (Certified Advertising Specialist/Master Advertising Specialist) is an investment in yourself, your career and your future. Whether you are just starting your certification process or taking the test, PPAChicago's Annual Scholarship Program can help. A limited number of scholarships to attend PPAI sponsored educational seminars are awarded each year to members of good standing of PPAChicago who have:

- Been affiliated with a PPAChicago member company for at least one (1) year;
- Worked full-time in the industry for a minimum of two (2) years; and
- Earned at least one (1.0) CEU from PPAI.

This year's scholarship winners must use the award money for 2010 - 2011 PPAI approved educational programs. Previous scholarship winners are eligible for a scholarship, but not in consecutive years.



Scholarship Application

Name _____ Position _____

Company Name _____ Years with firm _____

Address _____ City _____ State /Zip _____

Phone _____ Fax _____

Email _____

Past Promotional Product Company Affiliations & Years in the Industry: _____

How many CEU's have you earned toward your MAS or CAS _____

(Include copy of your CEU Transcript from PPAI). Call PPAI at 888/492-6892 or E-Mail education@ppa.org.

On a separate sheet, answer the following:

Describe one of the Seminar/Workshops you have attended and how it has benefited you?
How do you feel this scholarship will benefit your future in the Promotional Products Industry?
List your committee work and activities with PPAChicago in the past.

- We encourage all employees of a member company to apply.
- All applications must be typewritten.
- This application must be received by fax or mail no later than **August 18, 2010**
- Scholarships are non-transferable and must be used within one year from award date.
- All applications will be screened by the Scholarship Committee for eligibility.
- 2010 Membership Dues must be paid.

This form may be duplicated for additional applicants' use.